

Offshore Regatta & Development Day

Safety Plan



OFFSHORE
CHAMPIONSHIPS

Event overview

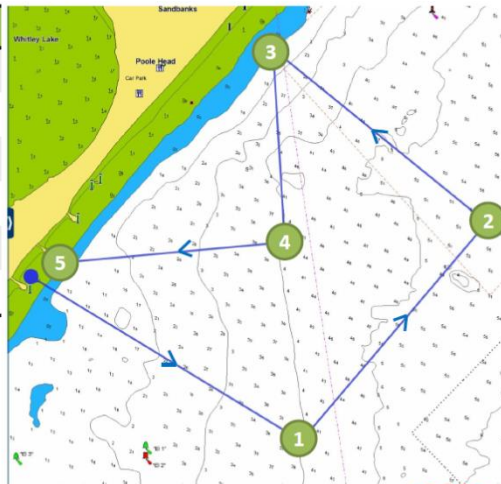
Event format

The British Rowing Offshore Development Day will take place on Saturday 29 July 2017 and the Offshore Regatta on Sunday 30 July 2017, at Sandbanks Beach, Banks Rd, Poole BH13 7QQ.

All races will be in FISA Class Coastal boats and follow the British Rowing's Rules of Racing and the associated Offshore Departures. Heats will be over 4km and finals over 6km and will use beach starts and finishes. The racing course will be an M shape and at it furthest point 2.1km offshore. Races will have between 6 and 10 crews racing in each race and there will be up to 3 races on the course at any one time starting in three waves.

Heats 4k course

Start		50°41'366 N 001°56'127 W
TP1	1.0k (1.0k)	50°41'079 N 001°55'456 W
TP2	0.9k (1.9k)	50°41'454 N 1° 54'960 W
TP3	0.8k (2.7k)	50° 41'735 N 001° 55' 506 W
TP4	0.6k (3.3k)	50° 41'422 N 001°55'477 W
TP5	0.7k (4.0k)	50° 41'387 N 001°56'067 W
Finish		50°41'366 N 001°56'127 W

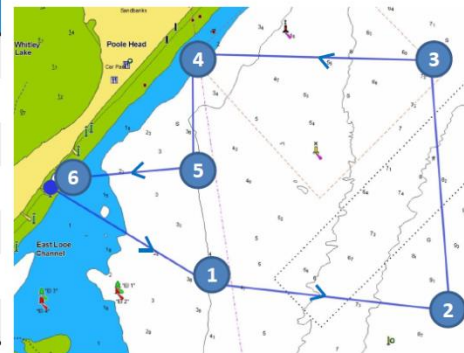


The placement of the Turning Point Markers will be in the approximate positions of the coordinates. Please use common sense and visual identification in navigating the course.



Finals 6k course

Start		50°41'366 N 001°56'127 W
TP1	1.0k (1.0k)	50°41'079 N 001°55'456 W
TP2	01.2k (2.2k)	50°41'025 N 1° 54' 388 W
TP3	1.3k (3.5k)	50° 41'717 N 001° 54' 465 W
TP4	1.2k (4.7k)	50° 41'735 N 001° 55' 506 W
TP5	0.6k (5.3k)	50° 41'422 N 001°55'477 W
TP6	0.7k (6.0k)	50° 41'387 N 001°56'067 W
Finish		50°41'366 N 001°56'127 W



The placement of the Turning Point Markers will be in the approximate positions of the coordinates. Please use common sense and visual identification in navigating the course.



Offshore Regatta & Development Day

Safety Plan



OFFSHORE
CHAMPIONSHIPS

The following Open (O) and Women's (W) events are offered in FISA Class coastal boats:

Event	Open	Women
Solo	C1x	CW1x
Double Sculls	C2x	CW2x
Coxed Quads Sculls	C4x+	CW4x+

Competitors must be 16 years or above on 29th July 2017.

Craft allowed

Only craft meeting the FISA coastal design regulations are eligible to race. The FISA Class Coastal boats, referred to in the UK as 'offshore' to distinguish the design from the UK south coast rowing boats.

These rowing boats are much wider and more robust than 'fine' racing boats and UK coastal craft, with the shape and designed specifically for dealing with waves and manoeuvrability in rougher water. The design greatly reduces the likelihood of capsizing or sinking.

All racing craft will be inspected prior to racing

General Safety provisions

All crews are expected to adhere to the British Rowing Rules of Racing and associated offshore departures, RowSafe, and COLREGs. All crews must:

- Attend the Crew Captains Briefing
- Assess the experience of the crew and their ability to cope with the conditions
- Sign out before they go afloat
- Carry the minimum safety equipment required onboard
- Follow the instructions of the marshals and umpires
- Sign in when they come ashore

There may be times when crews need to navigate with other water users, it is expected that crews will follow the relevant COLREGs and local navigation rules.

It is not permitted to warm up or cool down on the water during racing, or row in the dark.

The Event Organisers shall:

- Notify the local NHS Ambulance Trust (South Western Ambulance Service NHS Foundation Trust (SWASFT)). By going to <http://www.swast.nhs.uk/Get%20in%20touch/> entering name and e-mail address, clicking on "Events" and completing the form.
- Ensure that access routes for emergency services are clearly marked and checked at regular intervals
- Ensure that the tents are correctly erected and checked periodically
- Conduct a site inspection periodically and check for hazards such as tripping hazards from wires.
- Ensure that drinking water is available.

Offshore Regatta & Development Day

Safety Plan



OFFSHORE
CHAMPIONSHIPS

Safety Boats

Safety boat drivers will be qualified to at least RYA Level 2 Powerboat with Coastal Endorsement. All Safety Boats shall carry GPS or compass and charts, programmed with the locations of the turning points (as shown above).

During Racing

Static marshals' boats will also be positioned in at the first turning point (TPI) and the furthest turning point (TP3) reporting on the position of crews within the fleet.

Safety cover down the course will be provided by 3 launches moving with the fleet who will be responsible in the first instance for the participants' safety.

Each race will have a Race Umpire (in a RIB) whose responsibility is the safety and fairness of the race. At any one time, there will be up to 3 races and 3 Race Umpires on the water.

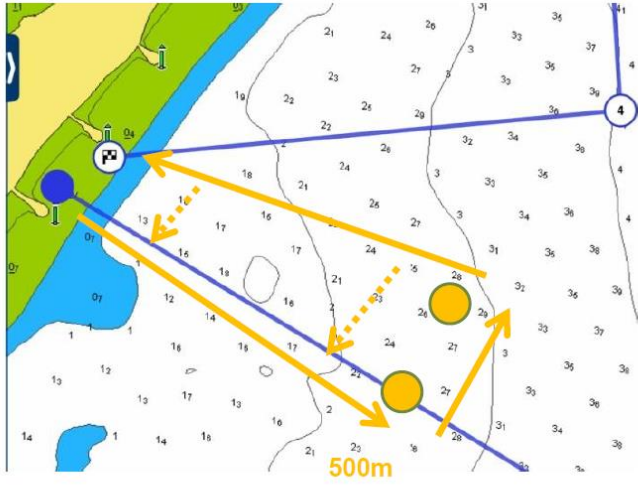
If several of the safety boats are assisting casualties, the Event Director shall reassess the risk to event as whole, abandon the event and evacuate the course.

There will be a total of 9 support craft, all occupants of which will wear a life-jacket.


During Training

A safety boat will patrol a specified training zone during scheduled training times. Crews training outside of this zone or outside of these times are responsible for their own safety in line with their club's own rules.

Saturday Training Zone



All boats must sign in and out.
There is no safety cover outside of the training zone
If you choose to go beyond the Training Zone it is important that you follow your club rules for training and assess the risks.



BRITISHROWING

Offshore Regatta & Development Day

Safety Plan



OFFSHORE
CHAMPIONSHIPS

Safety on the Beach

A 'spotter' will oversee the shoreline during the beach starts and the beach finishes and alert the lifeguards to any incidents. Boat zones and spectator spaces shall be clearly marked out on beach using crowd barriers, tape and signage to mark out areas. Marshals will be present to alert spectators that move to close to potential areas of risk.

Poole Harbour entrance and commercial shipping

The planned race course does not enter or cross any marked navigational channels. Crews are instructed that these are NO GO ZONES for racing crews.



NO GO ZONES

1. East Looe Channel
2. Poole Harbour Navigation Channel

In the event of the race beach being closed to returning crews by large waves, and crews needing to enter NO GO ZONES, Race control will communicate with the Harbour Master to coordinate the fleet movement.

Coordination and Communication

Race Control and Event Safety Adviser will be situated on the beach, at Race Control located close to the finish line. Race Control will monitor all radio VHF and coordinate all race UHF traffic.

At the beginning of each day, Race Control shall carry out two-way radio checks with all stations as described in RowSafe Section 2.3.

Offshore Regatta & Development Day

Safety Plan



OFFSHORE
CHAMPIONSHIPS

The Event Safety Adviser will act as coordination point for any incident on the water. Any water based incident which is part of a bigger overall emergency, will be coordinated by HM Coastguard.

Whilst the Race Director or the Safety Adviser will coordinate actions as far as possible, all safety crews should take actions under their own initiative as appropriate.

During racing the Race Director (RCC) will be on the beach, and available on UHF radio, VHF radio and mobile phone (for non-emergency and confidential matters). Prior to the first race of the day the Race Director will make a course inspection

Head of Communications and Marketing for British Rowing will coordinate any external communications on behalf of British Rowing throughout the event. Any communications which relates to a safety matter will be signed off by the British Rowing Offshore Championships Safety Adviser and the British Rowing's Director of Pathways.

A full schedule of available communications, including mobile phone numbers for all concerned, will be produced in the week before the event and circulated widely (and placed on the event web site).

Information

The following information will be displayed on notice boards

- The circulation patterns for:
 - Training
 - 4km Race
 - 6km race
- Traffic patterns for beach start and finish
- Race schedule
- Draw
- No-Go zones
- Emergency numbers

Please see also the supporting documents:

- Emergency Plan
- Alternatives Arrangements Plan
- Briefing for Captains and Officials
- Information for Participants and Officials Prior to the Event
- Boat Inspection Checklist

Record of participating boats

All rowing craft have boat identification numbers on the bows of the boat.

During training and racing all Crew Captains will sign in and out with Control Commission as they go onto the water and as they return. Race Umpires and race officials shall have event start list and be notified live of any withdrawals.

Offshore Regatta & Development Day

Safety Plan



OFFSHORE
CHAMPIONSHIPS

During the race, Race Control will monitor the number of crews in each race. Officials will record crews passing the turning points (TPI and TP3), and update Race Control on numbers as each race passes.

Casualty recovery locations

The medical facilities and an ambulance will be situated behind the Race Beach, Sandbanks Beach. Casualties coming ashore by safety boat will be landed either on the race beach close to the ambulance or taken to the jetty at Sandbanks Yacht Co.

The event will be registered with the South Western Ambulance Service NHS Foundation Trust (SWASFT), via the electronic form www.swast.nhs.uk/Get%20in%20touch/

The site owners are aware of the event and have agreed to this.

Name	Postcode	Contact
Sandbanks Beach (Race Beach) (Race medics)	BH13 7QQ	Jude Martin 07836 603158
Inside Poole Harbour		
Sandbanks Yacht Company	BH13 7RD	01202 611262

In an emergency, there may be other facilities that can be utilised (see Emergency Plan)

Tide times

Tide and sunrise/sunset times for 29 and 30 July 2017 at Poole Harbour.

All times below are shown in local British Summer Time.

Pool Harbour				Poole Entrance			
29 July		30 July		29 July		30 July	
LW 0910	0.8m	LW 0956	1.0m	HW 0104	2.0	HW 0054	1.8
HW 1341	1.9m	HW 1324	1.8m	LW 0852	0.7	LW 0941	0.9
LW 2138	1.1m	LW 2230	1.2m	HW 1403	1.9	HW 1459	1.7
HW 2452	1.9m			LW 2123	1.0	LW 2216	1.2

Offshore Regatta & Development Day

Safety Plan



OFFSHORE
CHAMPIONSHIPS

	29 July	30 July
Sunrise	0531	0532
Sunset	2057	2057

Event schedule outline (timings are approximate)

Time (BST)	Saturday 29 July Activity
0600-0800	Trainer unloading
0900-0930	Crew registration
1000-1400	Master Class and practical beach starts and finishes (boats within 250m of shore)
1400-1600	Crew training & Umpires Seminar
1630-1730	Captains meeting

Time (BST)	Sunday 30 July Activity
0800-0930	Training
1000 -1040	Heat 1(C1x)
1130-1210	Heat 2(C1x)
1300-1350	Final A (CW4x+, C2x, CW1x) (3 races with 5 min start intervals)
1410	Prize Giving
1500-1550	Final A (C4x+, CW2x, C1x) (3 races with 5 min start intervals)
1610	Prize Giving
From 1900	Boat loading

Officials and Safety launches and radio availability

Insert phone numbers and Radio Channels

Name	Name of boat	Crew	Comms
Safety launch 1	Northern Exposure Rescue	2	Mobile Phone & UHF & VHF
Safety launch 2	Northern Exposure Rescue	2	Mobile Phone & UHF & VHF
Safety launch 3	Northern Exposure Rescue	2	Mobile Phone & UHF & VHF
Umpire Launch 1	Northern Exposure Rescue	2 +2 umpires	Mobile Phone & UHF & VHF

Offshore Regatta & Development Day

Safety Plan



OFFSHORE
CHAMPIONSHIPS

Umpire Launch 2	Northern Exposure Rescue	2 +2 umpires	Mobile Phone & UHF & VHF
Umpire Launch 3	Northern Exposure Rescue	2 +2 umpires	Mobile Phone & UHF & VHF
Marshal Launch (TP1)	MV Elfreda (NHYC)	2 +1 umpire	Andy Page 07724019058 & UHF & VHF
Marshal Launch (TP3)	Local Club	2	Mobile Phone & UHF
Committee Work boat	RIB work boat	2	Ian Dryden 07906 432 405 UHF & VHF

*mobile phones only to be used for non-emergency and confidential matters.

ALL LAUNCHES SHOULD BE EQUIPPED WITH VHF RADIOS

Event control on the day

Location	Function	Name	Mobile phone
Start & Finish Beach	Race Control	Race Control	
Start & Finish Beach	Safety Adviser	Jo Johnston	07454 339863
Start & Finish Beach	Event Director / RCC	Guin Batten	07710 457442
Start & Finish Beach	Race Comm Chair	Richard Dennis	07831 125250
Start & Finish Beach	Event Manager (Beach)	Courtney Macdonald	07876 825 202

Offshore Regatta & Development Day

Safety Plan



OFFSHORE
CHAMPIONSHIPS

Event committee and key function leads on the day

Location	Function	Name	Mobile phone
Start & Finish Beach	Organising Com'ttee Chairman	Rosie Mayglothling	07702596336
Start & Finish Beach	Beach Master (Pool Boats)	James Andrews	07818 576 142
Start & Finish Beach	Event Manager (Beach)	Courtney Macdonald	07876 825 202
Start & Finish Beach	Volunteer Coordinator	Courtney MacDonald	07876 825 202
Start & Finish Beach	Welfare Coordinator	Sarah Harris	07818 576149
Start & Finish Beach	Race Director	Guin Batten	07710 457442
Start & Finish Beach	Race Committee Chairman	Richard Dennis	07831 125250
Start & Finish Beach	Event Rowing Safety Adviser	Jo Johnston	07454 339863

Other Key contact

Organisation	Contact	Phone / VHF	Postcode
<u>Poole Harbour Commissioners</u>	<u>Richard Dixon</u> richarddixon@phc.co.uk	01202 440233 CH14	BH15 4AF
Poole Harbour Commissioners	Harbour Control	CH 14 01202 440230	BH15 4AF
Borough of Poole	Lucy Lumber Events Support Officer	01202 261328	BH17 7BJ
Borough of Poole	Gemma Wilton Rec. Dev't Officer	07814 423828	BH17 7BJ
RNLI Poole	Boat house	01202 665 607	BH15 1HA
Coastguard	General	0344 382 0651	
Coastguard	UK Coastguard	VHF Channel 16	
British Rowing on duty	On duty officer		

Additional Info: Public Slipway at Baiter Park, BH15 1UY : The daily tariff is £13.50 before 2.30 pm and £10.50 after 2.30 pm, which includes the parking of car and trailer. The car park is locked at midnight. This facility is run by the Poole Borough and queries should be directed to (01202) 633 285

END